

FUKUSHIMA INSTITUTE FOR RESEARCH, EDUCATION AND INNOVATION (F-REI)

SUMMER INTERNSHIP

2026

FULLY FUNDED

Application Period April 20 ~ June 5, 2026

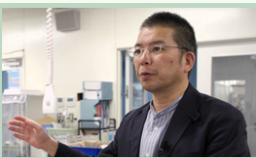
Fukushima Institute for Research, Education and Innovation (F-REI) is a research institute established on April 1, 2023 by the Government of Japan, with the aim of realizing the revitalization of Fukushima. The purpose of “F-REI Summer Internship” is to allow students to gain first-hand experience of laboratory experiments and field work alongside our researchers.

Come and challenge yourself as a researcher in Fukushima!

There are two research units you can choose from

Soil and Plant Multi-Dynamics Research Unit

Internship Period: August 19 ~ 27, 2026 (9 Days)
 + online orientation session on Monday, August 17, 2026



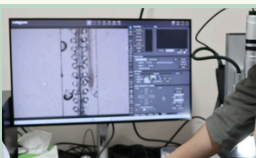
Unit Leader
Dr. NIHEI Naoto

Research theme:
 Analysis of complex interactions between plants, soil, and microbes

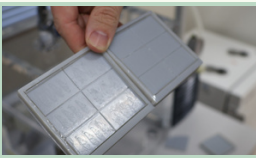
Activities:
 Design and fabrication of microdevices for use in plant microscopy

Methods that you'll learn:
 3D printing, plant cultivation in laboratory, confocal laser scanning microscopy, etc.

Eligible candidates:
 Undergraduate, master's, and doctorate students enrolled in a university in Japan
 (Specialization: Agriculture, Biology, Biochemistry, or other related fields)



Microscopy of plant tissue cultured in a microdevice



A microdevice made of polydimethylsiloxane (PDMS)

Regional Environmental Co-Creation Unit

Internship Period: August 18 ~ 24, 2026 (7 Days)
 + online orientation session on Friday, August 7, 2026



Unit Leader
Dr. HAYASHI Seiji

Research theme:
 Analysis of transfer of radionuclides in the ecosystem

Activities:
 Field sampling of environmental specimens (river water, plants, etc.), followed by analytical experiments

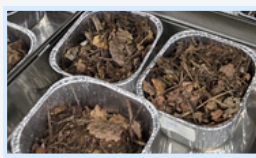
You will learn about:

- Field sampling techniques
- Sample pre-treatment & analysis
- Radiation measurement (basics)
- Practical aspects of the research process

Eligible candidates:
 3rd- to 4th-year undergraduate, master's, and doctorate students enrolled in a university in Japan



Filtration process of collected river water samples



Fallen leaves collected from forest sampling sites

Disclosures:

- Funding includes transportation and accommodation.
- This program is NOT part of F-REI's recruitment process.



Now accepting internship applications!
www.f-rei.go.jp/english/activity/summer_internship_2026